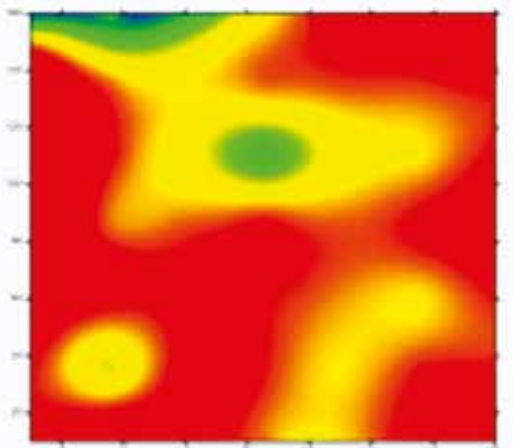
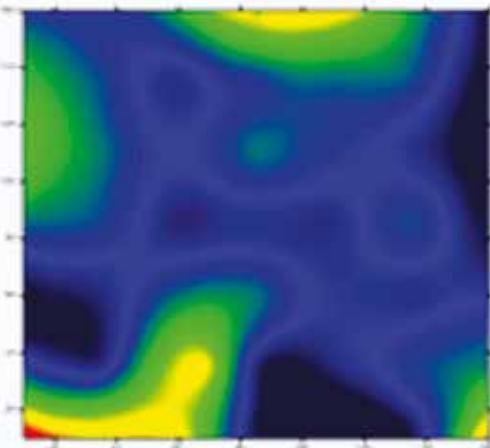
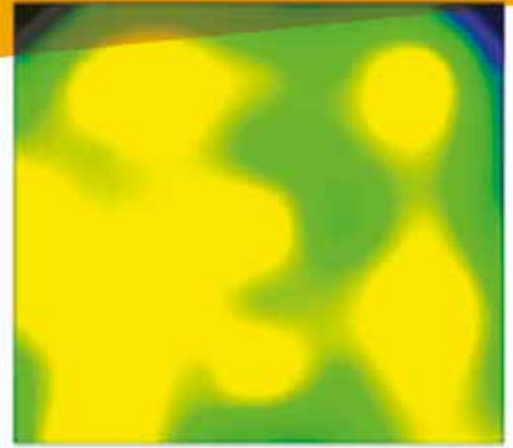
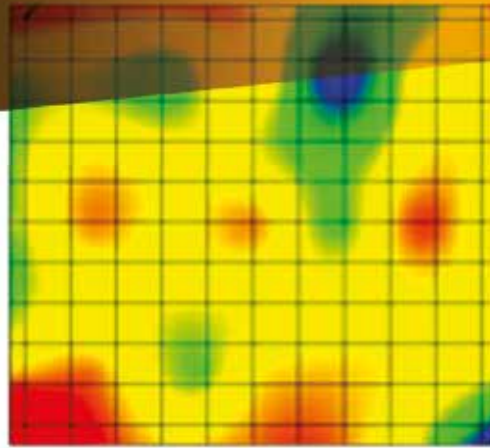
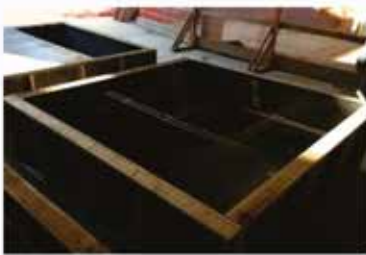
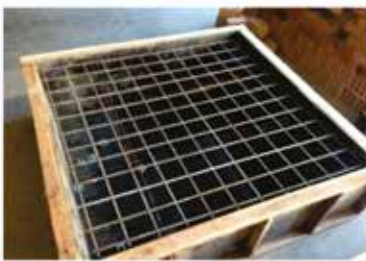


Volume 10, Number 2

April, 2017

ISSN 1983-4195



Contents

Study on reliability of punching shear of flat slabs without shear reinforcement according to NBR6118
M. L. CARVALHO, C. R. SILVA and F. R. STUCCHI

Reliability of partially encased steel-concrete composite columns under eccentric loading
M. F. PEREIRA, A. T. BECK and A. L. H. C. EL DEBS

Applications of a LITS semi-empirical model in plain and reinforced concrete members subjected to a uniaxial compressive load
T. E. T. BUTTIGNOL

Statistical analysis of the second order effects variation with the stories height of reinforced concrete buildings
D. M. OLIVEIRA, N. A. SILVA, C. C. RIBEIRO and S. E. C. RIBEIRO

Analysis of reinforced concrete structures through the ultrasonic pulse velocity: technological parameters involved
D.S. ADAMATI, A. LORENZI, J. A. CHIES and L.C.P. SILVA FILHO

Finite element model for nonlinear analysis of reinforced concrete beams and plane frames
R. S. B. STRAMANDINOLI and H. L. LA ROVERE

Comparison between simplified and FE models for short-term deflection in continuous RC beams
E. JUNGES and H. L. LA ROVERE

Determination of the ULS, for columns with small dimensions, under biaxial bending and symmetrical fire conditions
M. CHEREM and V. P. SILVA

Numerical and experimental evaluation of masonry prisms by finite element method
C. F. R. SANTOS, R. C. S. S. ALVARENGA, J. C. L. RIBEIRO, L. O. CASTRO, R. M. SILVA, A. A. R. SANTOS and G. H. NALON

Strength evaluation of concrete corbels cast in a different stage of columns
D. L. ARAÚJO, S. A. AZEVEDO, E. M. OLIVEIRA, E. M. O. SILVA and L. A. OLIVEIRA JÚNIOR