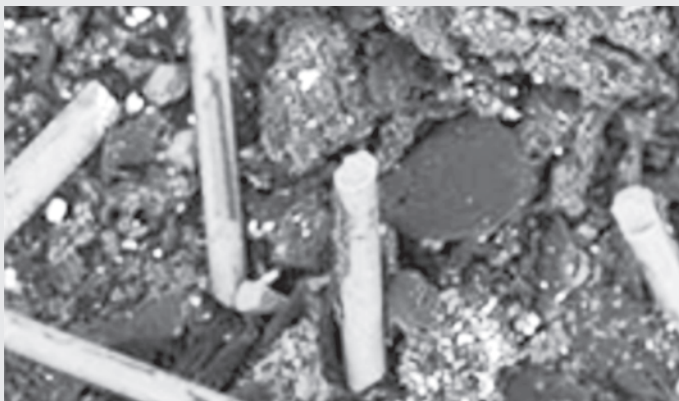
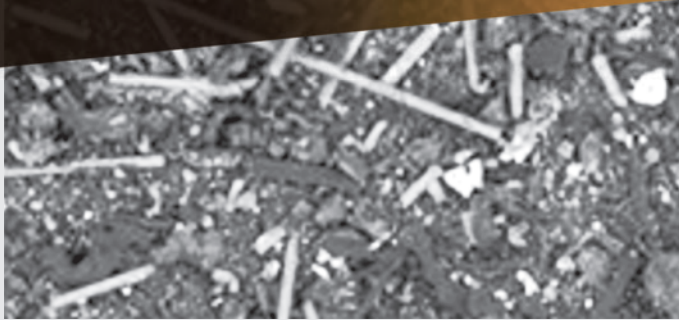


Volume 12, Number 3

June, 2019

ISSN 1983-4195



### Contents

**Slabs strengthened for punching shear with post-installed steel and CFRP connectors**

M. J. M. PEREIRA FILHO, M. V. P. FREITAS, D. F. A. SANTOS, A. J. C. NASCIMENTO and M. P. FERREIRA

**Discussion about progressive collapse of masonry buildings**

T. R. C. FELIPE and V. G. HAACH

**Retarding effect of grinding dust and its influence on the physical-mechanical and rheological properties of cementitious matrices**

R. D. MARIANO, J. S. ANDRADE NETO, M. R. MORELLI and D. V. RIBEIRO

**Plate with holes as shear connector in cold formed steel composite beams**

O. P. AGUIAR, R. B. CALDAS, F. C. RODRIGUES and H. N. BELLEI

**Numerical modeling of circular, square and rectangular concrete columns wrapped with FRP under concentric and eccentric load**

D. S. OLIVEIRA and R. CARRAZEDO

**Reliability analysis of built concrete dam**

K. O. PIRES, M. M. FUTAI, T. N. BITTENCOURT and A. T. BECK

**Thermo-mechanical analysis of mass concrete elements made of rubberized concrete**

A. C. ALBUQUERQUE, S. B. dos SANTOS, J. L. CALMON and L. C. P. da SILVA FILHO

**Pervious concrete made with electric furnace slag (FEA): mechanical and hydraulic properties**

G. F. B. SANDOVAL, I. GALO BARDES, C. DIAS, A. CAMPOS and B. M. TORALLES

**Waste tires and the burning of sugarcane bagasse in the manufacture of concrete pavers (pavers)**

S. P. S. ALTOÉ, A. SALES and C. H. MARTINS

**Thermal simulation of prisms with concrete blocks in a fire situation**

F. S. RODOVALHO and M. R. S. CORRÊA

**Shear strength analysis of slabs without transverse reinforcement under concentrated loads according to ABNT NBR 6118:2014**

A. M. D. SOUSA and M. K. EL DEBS

**Shrinkage and porosity in concretes produced with recycled concrete aggregate and rice husk ash**

V. CECCONELLO, B. R. C. SARTORI, M. P. KULAKOWSKI, C. S. KAZMIERCZAK and M. MANCIO