



Ibracon Structures and Materials Journal
is published quarterly
(March, June, September and
December) by IBRACON.

IBRACON
Instituto Brasileiro do Concreto
Founded in 1972

R. Julieta do Espírito Santo Pinheiro, 68
Jardim Olímpia, São Paulo – SP
Brasil – 05542-120
Phone: +55 11 3735-0202
Fax: +55 11 3733-2190
E-mail: arlene@ibracon.org.br
Website: <http://www.ibracon.org.br>

Editors
Américo Campos Filho
(Brazil)

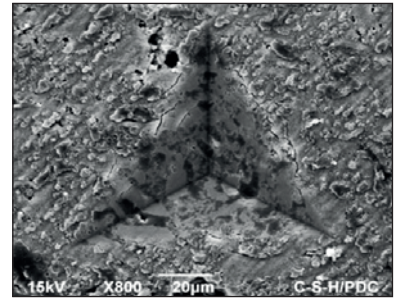
José Luiz Antunes de O. e Sousa
(Brazil)

Luiz Carlos Pinto da Silva Filho
(Brazil)

Romildo Dias Toledo Filho
(Brazil)

Cover Photo: ENSAIO DE NANOINDENTAÇÃO:
MICROGRAFIA DO C-S-H/PDC

Courtesy: F. PELISSER, CRICIÚMA, SC



Volume 4, Number 5
December 2011
ISSN: 1983-4195

REVISTA IBRACON DE ESTRUTURAS E MATERIAIS

IBRACON STRUCTURES AND MATERIALS JOURNAL

Contents

Synthesis of calcium silicate hydrate/polymer complexes

F. PELISSER, P. J. P. GLEIZE and M. PETERSON

695

Numerical and experimental analysis of the displacements evolution of reinforced concrete beams under repeated cyclic loads

J. OLIVEIRA FILHO, G. M. S. ALVA, R. M. F. CANHA and A. L. H. C. EL DEBS

711

Theoretical model for predicting the compressive strength of reinforced masonry

R. F. SILVA, J. S. CAMACHO and R. O. RODRIGUES

735

Specific mass and water absorption from concrete manufactured with alternate aggregates

E. C. ARAUJO and F. M. DIAS

764

The shear strength of steel fiber-reinforced concrete beams

A. L. MORENO JUNIOR and A. P. VEDOATO

784

Determination of modulus of elasticity of concrete from the acoustic response

H. J. F. DIÓGENES, L. C. COSSOLINO, A. H. A. PEREIRA, M. K. EL DEBS
and A. L. H. C. EL DEBS

792

Development of artificial neural networks for interpreting ultrasonic pulse velocity tests in concrete

A. LORENZI, L. C. P. SILVA FILHO and J. L. CAMPAGNOLO

814

Contribution to the obtainment of concrete elastic modulus using micromechanics modeling

A. H. BARBOSA, P. A. LOPEZ-YANEZ and A. M. P. CARNEIRO

845

Cover design & Layout:
Ellementto-Arte
www.ellementto-arte.com